

Installing the Headlights

The Nissan 300ZX headlight is the choice to use. In fact, we have been told that removing the carbon fiber strip on the top of the original Lamborghini Diablo lights, reveals the Nissan name.



The trick comes with how to mount the lights in the body. The lights actually need a mounting plate or brackets developed to mount the base plate of the lights to.



A frame must be designed to mount the headlights with some minor adjustments available to properly align the headlights with the openings.



(View as driver's side mount)

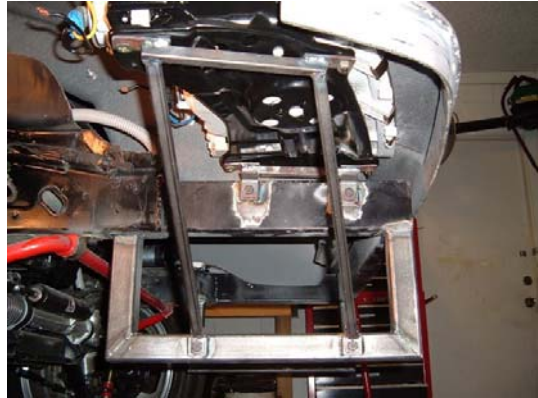
A template is drawn to manufacture the mounting brackets from. We chose to use $\frac{3}{4}$ " square tube for fabrication. The two tubes along the sides are cut $10\frac{3}{4}$ " in length. Both the cross tubes are $8\frac{3}{4}$ " in length. Note: flipping template over gives the other side layout.



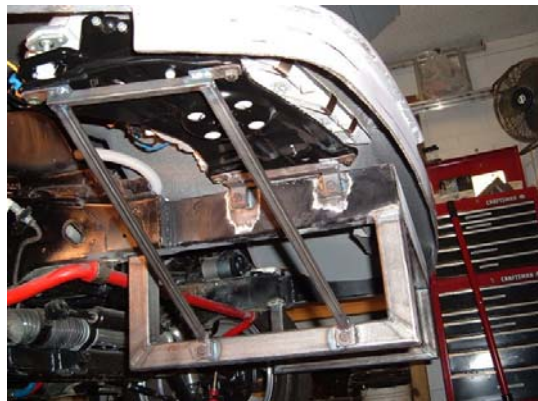
The three smaller brackets are $1\frac{1}{2}$ " X 3 " $\frac{1}{8}$ " steel plate. The larger bracket is 3 " X 3 " $\frac{1}{8}$ " plate.



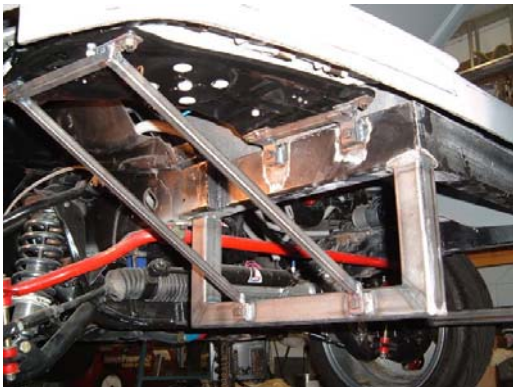
This is the tubes welded up before the mounting tabs are welded on.



Two tubes are welded across the base (as illustrated) to allow the bracket to be slid in and out. The slots in the mounting tabs are slotted to allow the headlight to be adjusted forward and backward.



When the headlight is properly installed, the fit should look like as follows.



The base can also have some lateral braces installed to further strengthen the rigidity of the mounting.

